

Automated Imaging for Accurate and Efficient Experiments

Designed for automated multidimensional observation and easy experiment setup, the IXplorē Pro microscope system enables effortless data collection and seamless acquisition of panoramic, multichannel images.

www.olympus-lifescience.com/ixplore-pro

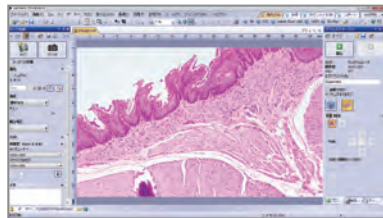
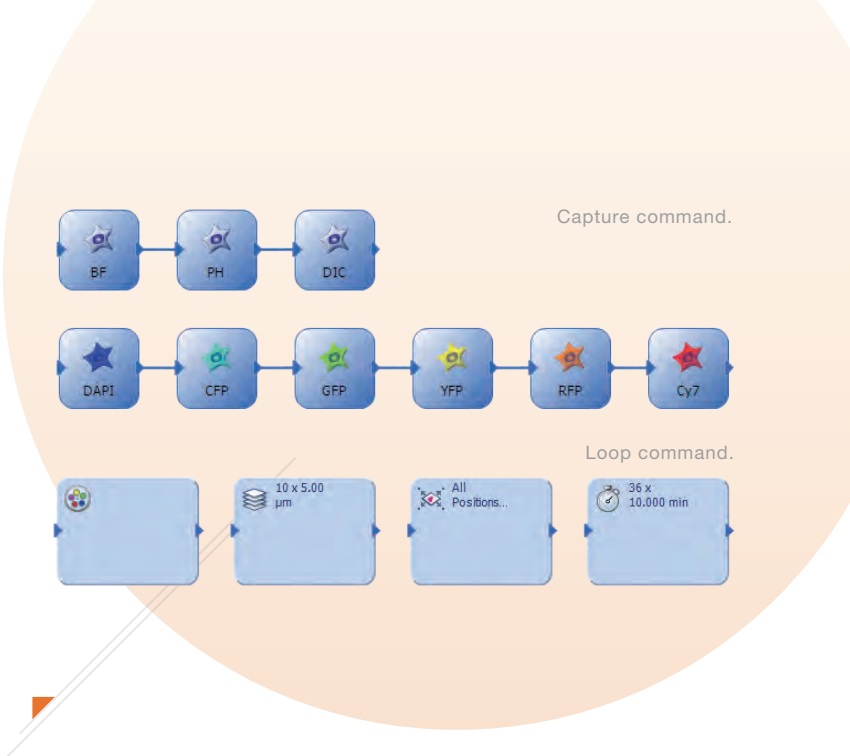


IXplore Pro

Microscope System
Automated imaging
for accurate and
efficient experiments

Ease of Use

Use the Graphical Experiment Manager (GEM) interface to effortlessly set up automated, multidimensional imaging experiments (X, Y, Z, T, wavelength, and positions).

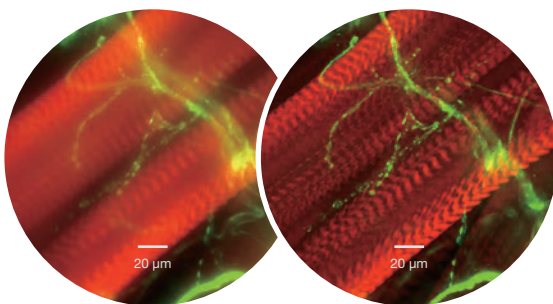
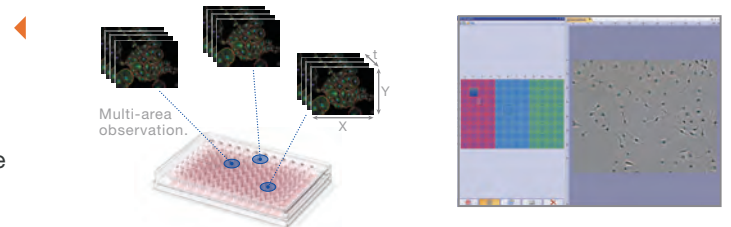


Precise, Reliable Hardware

Combine the Olympus cellSens focus map and focus compensation function with the IX3-SSU ultrasonic stage and fly-eye optics to generate precisely-stitched and evenly-illuminated panoramic images.

Well Plates Made Simple

The well plate navigator in cellSens software and its database function enable users to easily track, recall and navigate to various well plate positions.



Rapid Deconvolution

Quickly enhance imaging quality through the optional TruSight deconvolution technology.

TRU^{SIGHT}