

## High-Quality Imaging

Designed for simple multicolor fluorescence imaging and routine experiments, the IXplorē Standard microscope system is easy to operate and capable of excellent, publication-quality images. A range of encoded unit options make it easy to get accurate and reproducible results.

[www.olympus-lifescience.com/ixplore-standard](http://www.olympus-lifescience.com/ixplore-standard)



# IXplore Standard

Microscope System  
High-quality imaging

## Accuracy and Repeatability

The IXplore Standard microscope system enables accurate and repeatable experiments.

Reliably locate the same sample position.



Easily achieve Köhler illumination.



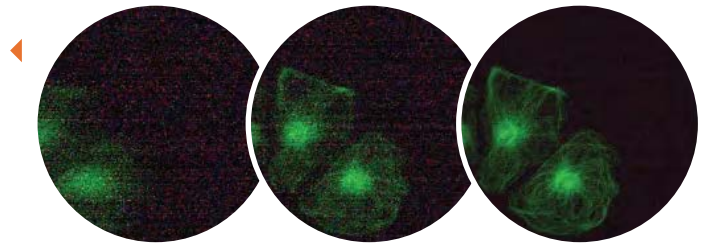
### ▶ Encoded Units

Optional Peripherals

A wide range of optional encoded units are available for a cost-efficient way to upgrade to an encoded microscope, helping to achieve reproducible and consistent experiments.

### Ease of Use

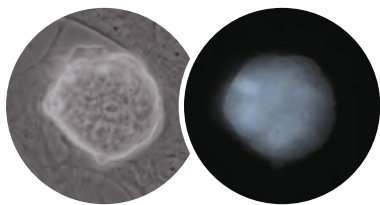
Designed to focus on dim fluorescent signals through intelligent multi-frame live noise reduction (FNR), the powerful Olympus cellSens software seamlessly integrates with the IXplore Standard system to significantly ease data acquisition.



Live image during stage movement.

The FNR function averages frames to improve live image signal at the moment the stage stops.

When the stage remains stationary, FNR further improves signal-to-noise of live images.



Special objective available for IPS/ES and floating cell observation.

### ▶ Simplify Your Workflow

Olympus long-working distance objectives support workflows that include plastic-bottom dishes, eliminating the need to subculture in glass-bottom dishes.

